

COVID-19 Vaccination Programme

Health and Wellbeing Board - Covid Vaccination Programme

Update - 7 July 2021

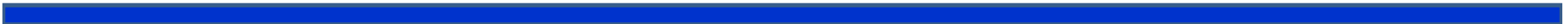
Dr Manisha Kumar - Medical Director, MHCC

Summary

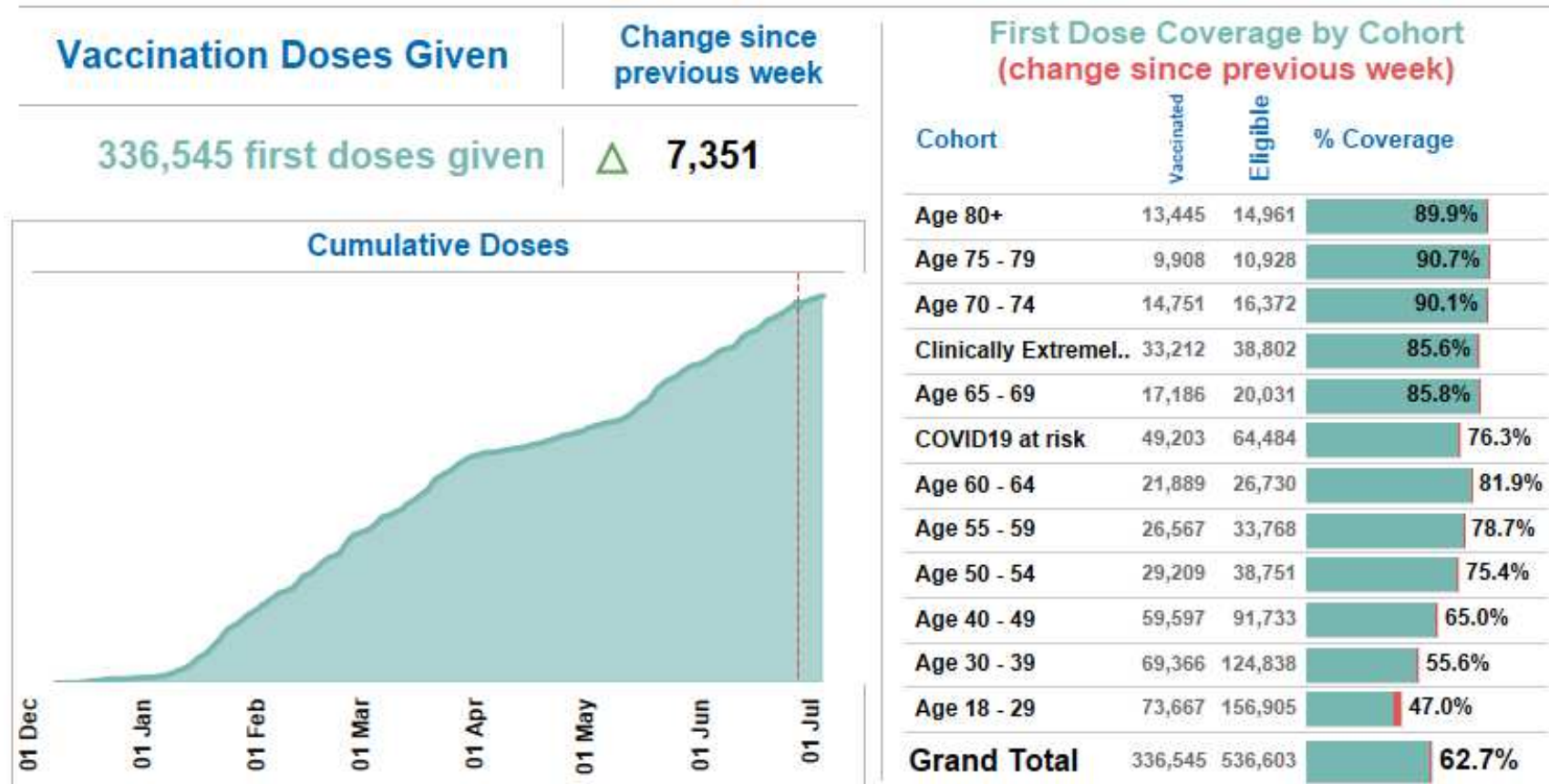
- Covid-19 vaccination coverage continues to increase rapidly in Manchester with 336,545 people having received the first dose of the vaccine as at 4 July 2021. Of this number, 219,308 have now received a second dose too.
- Delivery of the vaccine programme continues to be through a combination of primary care sites, pharmacy sites, the GM Mass Vaccination Centre, and a range of 'pop-up' and 'walk-in' clinics in locations across Manchester.
- All adults are now eligible to get the COVID-19 vaccine.
- Just under 50% of Manchester's population is aged under 25 (higher than the average for England as a whole (source: ONS Mid-Year Estimates). Manchester has around 278,000 people aged over 18 who have recently become eligible to receive their first dose.
- On 8 June Manchester (and whole of GM) was designated as an Enhanced Response Area, as part of this the vaccination drive in the city is focussing on inviting people from those wards at risk from the delta variant.
- ERA status builds on all the work we have already been doing and it also means that we get extra support to deliver vaccinations. Continued focus to close the vaccination coverage gap between different ethnicities and gender.
- Partnership working remains at the heart of the programme with MHCC, MCC, MFT and MLCO working together, supported by circa 3000 local volunteers. We are also engaged with both regional and GM teams.

Targeted activity to increase coverage

- Further boosting our vaccination programme to meet the current challenges with the Delta variant. This includes two new temporary vaccination sites set up in Moss Side and Belle Vue (free shuttle bus to site).
- Successful pilot in the city centre (2 July).
- Outreach and hyper local offers.
- Bespoke invitations to target populations e.g. drop-in times and clinics targeting taxi drivers, police and school and college staff
- Supported communications and engagement focussing on target communities and working with community networks and VCSE sector to provide tailored and culturally competent approaches
- Bespoke communications and engagement plan developed to target young people
- Concerted effort to encourage people to come forward for their second dose.
- Improved coverage is enabled by increased neighbourhood team workforce to cover all low uptake areas.

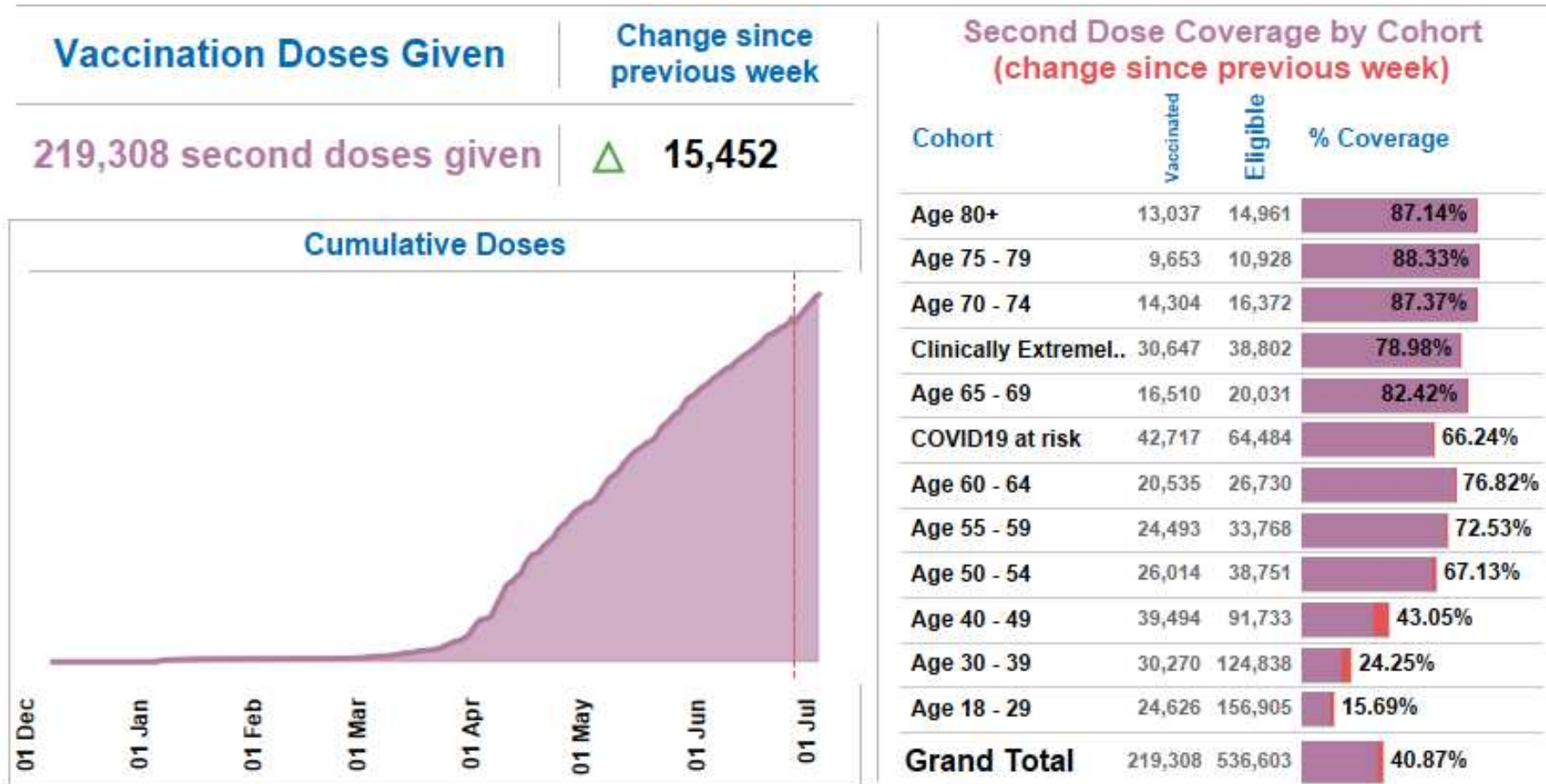


First dose vaccine coverage as at 4 July 2021

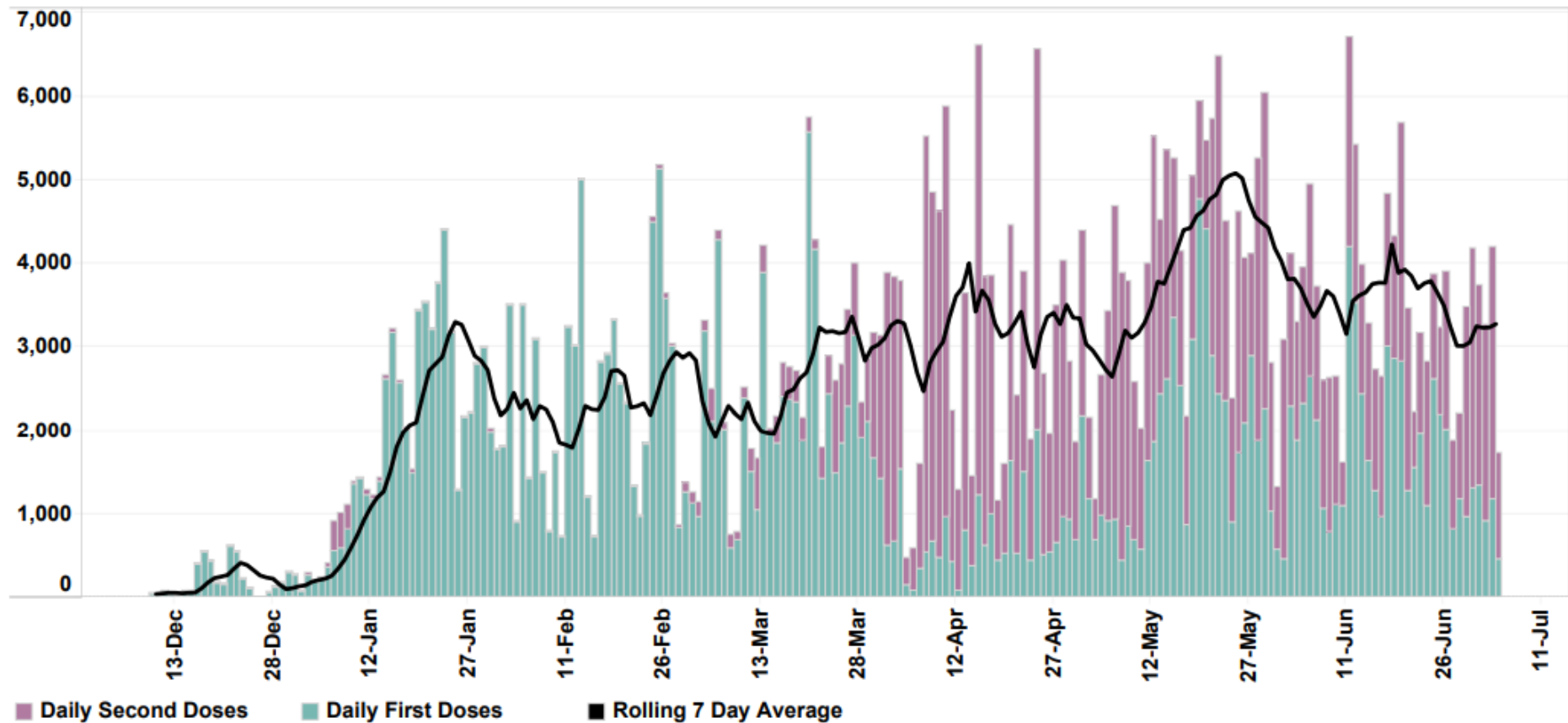


+18,297 patients registered with a Manchester practice vaccinated with their first dose over the last 2 weeks.

Second dose vaccine coverage as at 4 July 2021



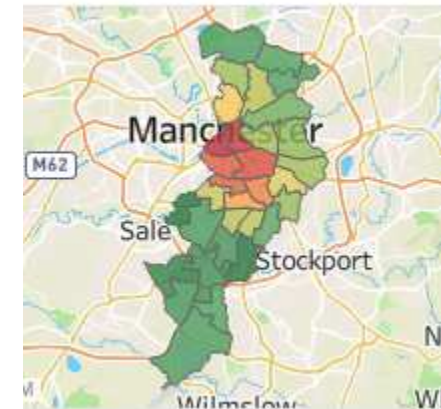
Daily vaccination doses given from programme outset



Coverage by electoral ward – cohorts 1-12 - 4 July

Ward	Vaccinated	Eligible	% Coverage (increase from 2 weeks ago)
Chorlton	8,648	11,629	74.4%
Didsbury East	9,533	12,884	74.0%
Brooklands	6,433	8,972	71.7%
Northenden	8,349	11,961	69.8%
Didsbury West	10,364	15,013	69.0%
Baguley	8,942	13,013	68.7%
Chorlton Park	10,220	15,102	67.7%
Higher Blackley	8,766	12,970	67.6%
Woodhouse Park	8,521	12,671	67.2%
Moston	9,451	14,141	66.8%
Sharston	8,615	12,953	66.5%
Charlestown	8,967	13,504	66.4%
Burnage	9,945	15,185	65.5%
Miles Platting and Newton ..	9,720	15,319	63.5%
Clayton and Openshaw	9,680	15,839	61.1%
Levenshulme	9,851	16,349	60.3%

Ward	Vaccinated	Eligible	% Coverage (increase from 2 weeks ago)
Crumpsall	8,339	13,927	59.9%
Gorton and Abbey Hey	9,041	15,117	59.8%
Ancoats and Beswick	8,638	14,575	59.3%
Harpurhey	9,425	16,316	57.8%
Old Moat	8,125	14,071	57.7%
Withington	8,403	14,679	57.2%
Whalley Range	8,099	14,318	56.6%
Longsight	9,694	17,475	55.5%
Cheetham	9,124	16,908	54.0%
Fallowfield	7,729	15,416	50.1%
Rusholme	8,435	18,171	46.4%
Moss Side	8,341	19,827	42.1%
Hulme	7,827	19,096	41.0%
Ardwick	9,966	25,201	39.5%
Piccadilly	5,134	14,051	36.5%
Deansgate	4,436	12,752	34.8%



Manchester GP records have been used to identify addresses. Ward residents not registered with a Manchester practice will therefore not be included in these figures. Unregistered patients are also not included.

Targeting inequalities – cohorts 1-12 – last 2 weeks

We aim for there to be no difference in coverage between white patients and those patients of other ethnic backgrounds. The table below tracks the difference, with a lower difference highlighting greater equality.

Ethnicity	Difference in Coverage from White Patients: 18 Jun	Difference in Coverage from White Patients: 02 Jul	Change
White and Asian	16.5%	14.4%	-2.0%
Bangladeshi	2.9%	1.6%	-1.2%
Any other Mixed or Multiple ethnic background	25.6%	25.2%	-0.3%
Pakistani	9.0%	8.8%	-0.3%
White and Black Caribbean	28.4%	28.2%	-0.2%
White and Black African	24.1%	23.9%	-0.1%
Declined to provide ethnicity status	18.2%	18.1%	0.0%
Any other Asian background	22.0%	22.2%	0.2%
Any other ethnic group	27.3%	27.7%	0.4%
Indian	9.9%	10.4%	0.5%
Arab	23.2%	23.7%	0.6%
No record of ethnicity status	35.9%	36.5%	0.6%
African	18.4%	19.1%	0.7%
Any other Black, African or Caribbean background	26.9%	27.6%	0.8%
Chinese	40.3%	41.3%	1.0%
Caribbean	22.1%	23.9%	1.8%

First dose coverage by gender and target group – cohort 1-12 – 4 July

First Dose Coverage by Gender				
Ethnicity	Gender	Vaccinated	Eligible	% Coverage (increase from 2 weeks ago)
All	Female	87,861	110,345	79.6%
	Male	83,135	111,150	74.8%
White	Female	57,501	66,074	87.0%
	Male	52,152	60,900	85.6%
Asian or Asian British	Female	12,048	15,111	79.7%
	Male	12,198	15,995	76.3%
Other ethnic group	Female	1,727	2,459	70.2%
	Male	1,916	2,970	64.5%
Mixed or Multiple ethnic groups	Female	1,642	2,525	65.0%
	Male	1,446	2,200	65.7%
Black, African, Caribbean or Black British	Female	6,083	9,309	65.3%
	Male	5,704	8,771	65.0%
Status Unknown	Female	8,860	14,867	59.6%
	Male	9,719	20,314	47.8%

Long Term Condition	Gender	Vaccinated	Eligible	% Coverage (increase from 2 weeks ago)
Learning Disability	Female	1,046	1,340	78.1%
	Male	1,626	2,182	74.5%
	Grand Total			75.9%
Serious Mental Illness	Female	2,689	3,740	71.9%
	Male	2,968	4,517	65.7%
	Grand Total			68.5%

Coverage by long term health condition - cohorts 1-6 – 4 July

First Dose Coverage by Long Term Condition

Long Term Condition	Vaccinated	Eligible	% Coverage (increase from 2 weeks ago)
Osteoporosis	1,007	934	92.8%
Atrial Fibrillation	6,747	6,238	92.5%
Peripheral Vascular Disease	3,912	3,576	91.4%
Cancer	9,753	8,913	91.4%
Parkinsons	707	639	90.4%
COPD	12,331	11,127	90.2%
Heart Failure	4,594	4,140	90.1%
Hypothyroidism	9,207	8,283	90.0%
CKD	13,338	11,976	89.8%
Dementia	2,758	2,471	89.6%
Hypertension	53,672	48,068	89.6%
Coronary Heart Disease	15,488	13,807	89.1%
Stroke	8,266	7,327	88.6%
Rheumatoid Arthritis	2,616	2,305	88.1%
Diabetes	34,602	29,984	86.7%
Obesity	50,625	43,571	86.1%
Palliative Care	2,565	2,182	85.1%
Epilepsy	3,944	3,238	82.1%
Asthma	30,612	25,101	82.0%
All Patients	162,845	130,302	80.0%
Learning Disability	3,522	2,672	75.9%
Smoking	39,923	30,181	75.6%
Mental Health	8,243	5,646	68.5%

Change in First Dose Coverage by Long Term Condition from 2 weeks..

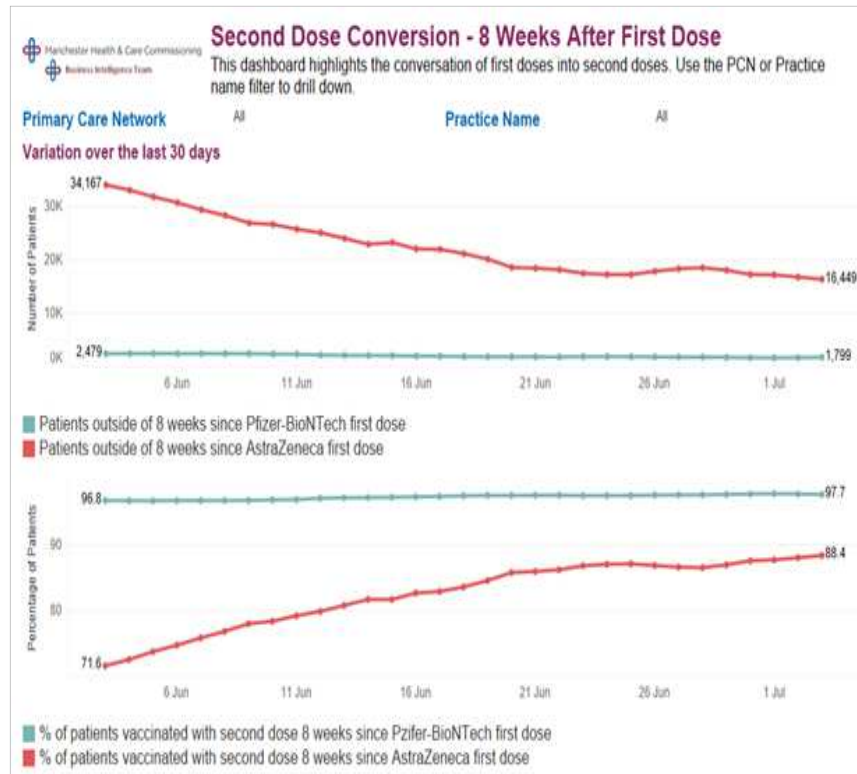
Long Term Condition	Eligible	Change in % Coverage (Additional Patients Vaccinated)
Asthma	30,612	1.7% (+506)
Learning Disability	3,522	1.3% (+47)
Mental Health	8,243	1.1% (+93)
Epilepsy	3,944	1.1% (+44)
Smoking	39,923	1.0% (+411)
All Patients	162,845	1.0% (+1,571)
Obesity	50,625	0.7% (+345)
Rheumatoid Arthritis	2,616	0.5% (+14)
Hypothyroidism	9,207	0.5% (+42)
Diabetes	34,602	0.4% (+143)
Coronary Heart Disease	15,488	0.3% (+51)
Stroke	8,266	0.3% (+25)
Hypertension	53,672	0.3% (+153)
Palliative Care	2,565	0.3% (+7)
COPD	12,331	0.2% (+29)
CKD	13,338	0.2% (+30)
Dementia	2,758	0.2% (+6)
Osteoporosis	1,007	0.2% (+2)
Cancer	9,753	0.2% (+16)
Heart Failure	4,594	0.2% (+7)
Atrial Fibrillation	6,747	0.1% (+8)
Peripheral Vascular Disease	3,912	0.1% (+2)
Parkinsons	707	0.0% (+0)

Spotlight - first dose for patients with a learning disability

Priority Cohort		Vaccinated	Eligible	% Coverage (increase from 2 weeks ago)	Ethnic Category and Gender		Vaccinated	Eligible	% Coverage (increase from 2 weeks ago)
01: Care Home Resident Age 6..	Care Home Resident ..	75	78	96.2%	White	Female	794	936	84.8%
02: Age 80 and over	Age 80 and over	11	14	78.6%		Male	1,161	1,434	81.0%
03: Age 75 - 79	Age 75 - 79	31	37	83.8%	Other than White	Female	211	313	67.4%
	Age 70 - 74	74	77	96.1%		Male	330	511	64.6%
04: Age 70 - 74 OR Shielding OR QCOVID	QCOVID	209	249	83.9%	Status Unknown	Female	41	91	45.1%
	Shielding	417	479	87.1%		Male	135	237	57.0%
05: Age 65 - 69	Age 65 - 69	64	71	90.1%	All	Female	1,046	1,340	78.1%
06: Higher Risk	Higher Risk	1,791	2,517	71.2%		Male	1,626	2,182	74.5%
Grand Total				75.9%					

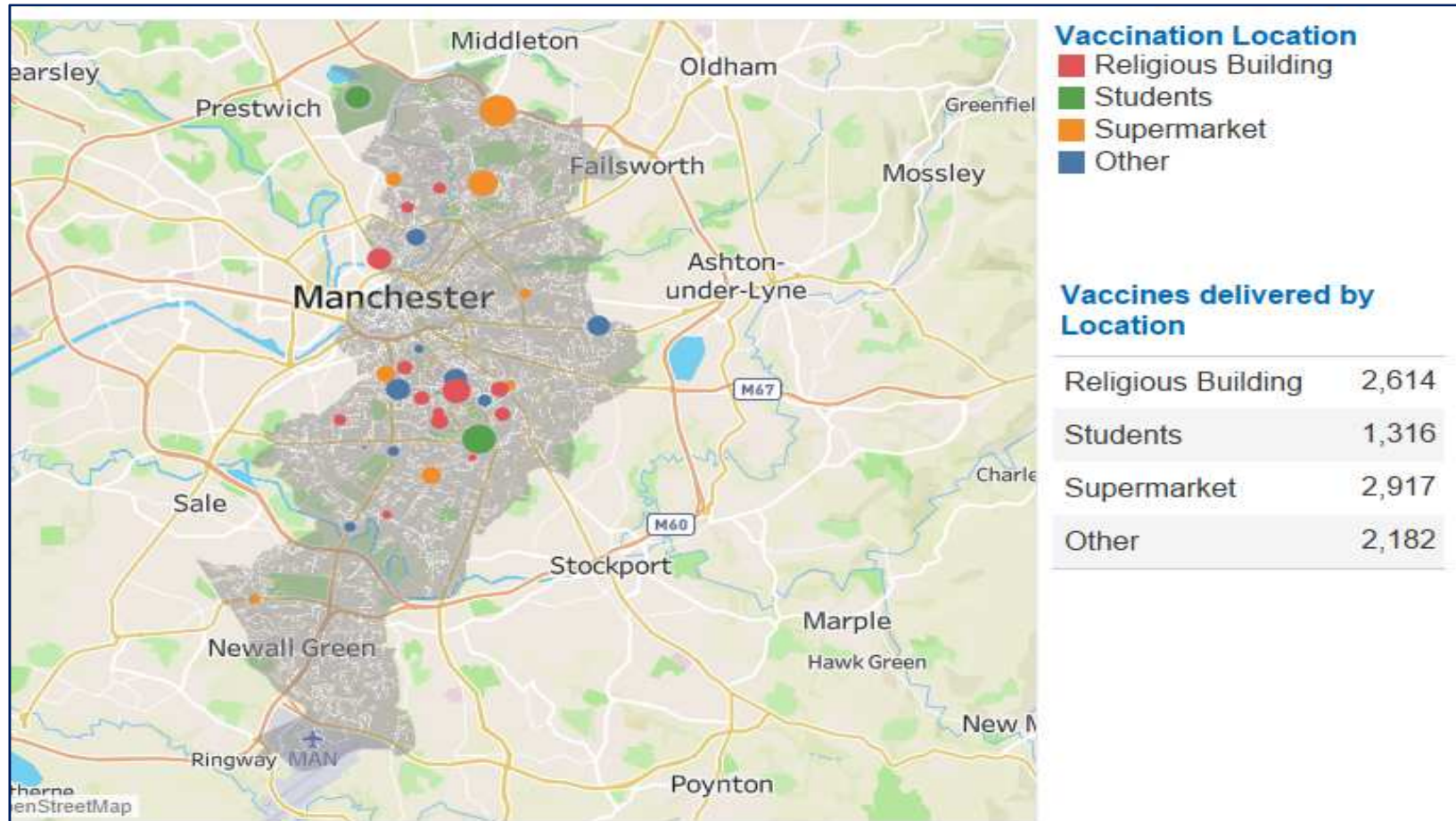
Patients registered with a Manchester practice only.

Second dose conversion – 8 weeks after first dose



Ethnicity	% of patients vaccinated with Second Dose 8 weeks after First Dose			Patients not receiving Second Dose 12 weeks after First Dose		
	AZ	Pfizer	Total	AZ	Pfizer	Total
Grand Total	88.4%	97.7%	91.7%	16,449	1,799	18,248
Arab	84.5%	96.3%	87.4%	128	10	138
African	83.3%	96.6%	87.5%	1,169	108	1,277
Any other Black, African or Caribbean background	84.1%	96.3%	87.5%	243	22	265
Any other ethnic group	84.3%	97.0%	87.8%	515	37	552
Pakistani	85.5%	94.7%	87.8%	2,004	244	2,248
White and Black Caribbean	85.0%	95.4%	88.3%	106	15	121
White and Black African	85.0%	96.9%	88.4%	119	10	129
Any other Asian background	84.8%	97.8%	88.5%	457	26	483
Any other Mixed or Multiple ethnic background	87.0%	96.4%	89.5%	133	13	146
Any other White background	86.9%	97.1%	89.8%	809	70	879
No record of ethnicity status	86.3%	97.3%	89.8%	2,227	210	2,437
White and Asian	86.0%	97.7%	90.0%	70	6	76
Declined to provide ethnicity status	87.6%	97.8%	90.7%	179	14	193
Caribbean	87.9%	96.9%	90.9%	245	32	277
Gypsy or Irish Traveller	88.5%	100.0%	91.7%	3	0	3
Indian	87.0%	97.1%	91.7%	362	69	431
Bangladeshi	90.4%	98.5%	92.3%	184	9	193
Chinese	91.3%	96.9%	92.8%	198	26	224
English, Welsh, Scottish, Northern Irish or British	90.5%	98.2%	93.5%	7,085	840	7,925
Irish	90.6%	98.0%	94.0%	213	38	251
Roma	100.0%		100.0%	0		0

Vaccination pop up delivery



The greater the number of vaccines given at a site the larger the circle on the map.